

# The Dunbar



The Dunbar fully upholstered dining chair features a curved shape for a contemporary feel and comfortable dining experience. Customised in Australia with a hardwood frame and your choice of timber stain and upholstery.

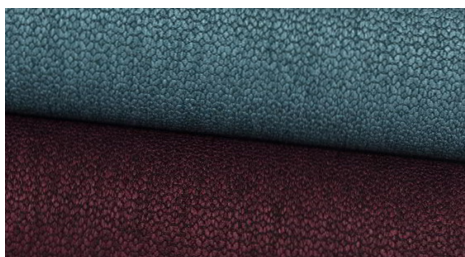
<b>Size</b>	500w x 500d x 850h
<b>Warranty</b>	2 year structural warranty
<b>Production</b>	6-8 weeks approx
<b>Frame</b>	Solid Oak
<b>Custom Stain</b>	\$30 per chair
<b>Price (Fabric)</b>	\$349 + 1.5m Fabric
<b>Price (Leather)</b>	\$454 + 2.5m Leather

Indicative Pricing* (GST incl.)	
Warwick Bingle (\$44p/m)	\$415
Warwick Bodhi (\$55p/m)	\$431
Warwick Magma (\$66p/m)	\$448
Warwick Kalahari (\$77p/m)	\$464
Warwick Macroseude (\$99p/m)	\$497
Warwick Lustrell Charisma Vinyl (\$66p/m)	\$448
Puccini Leather (\$99p/m)	\$701
Medici Leather (\$143p/m)	\$811



CUSTOMISED IN SYDNEY

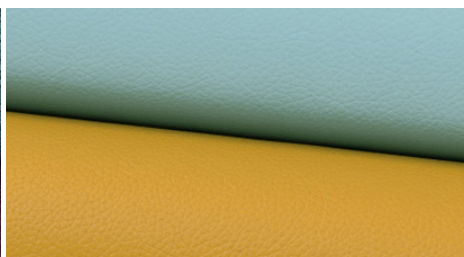
## Fabric



The softness and luxury of a full fabric upholstered dining chair is the ultimate finishing touch to a dining suite. Find a fabric or a combination of fabrics that perfectly encapsulate your personal style with the 1000+ library of fabrics. Free sample/cuttings available.

**Popular ranges:** Bodhi, Dunard, Plush, Victory, Cleo, Galaxy, Antila  
**Refer:** [www.warwick.com.au](http://www.warwick.com.au)

## Faux Leather



Quality range of vinyl and faux leather fabrics with textures ranging from metallic to embossed imitation leather. More cost effective than leather (starting at \$55p/m), and less meterage is required per chair. Free sample/cuttings available.

**Popular Ranges:** Warwick Lustrell Charisma, Warwick Lustrell Allure  
**Refer:** [www.warwick.com.au](http://www.warwick.com.au)

## Genuine Leather



The quality and feel of genuine leather upholstery is unsurpassed. Full leather, grain corrected leather, full aniline and semi aniline leather ranges available in hundreds of pigmented colour options. Free sample/cuttings available.

**Popular ranges:** Puccini, Medici, Aero, Heirloom  
**Refer:** [www.leatheritalia.com.au](http://www.leatheritalia.com.au)

\*Prices are indicative only and subject to change based on the per meterage rate of the fabric or leather selected, or selected stain/finish to leg. Additional meterages may be required for customisations such as contrasting piping and pattern matching. Speak to your Furniture Specialist for an accurate quotation.